



Eastland
Network



TREE SAFETY

Trees and power lines

From the smallest inner city section to the largest farm, the person who owns the land is responsible for all the trees that grow on it.

The Electricity (Hazards from Trees) Regulations 2003 are designed to protect both the public's safety and the supply of electricity.

Trees close to power lines are a safety hazard, with the potential to cause injury or death from electrocution – and they're also a major cause of power outages. When conditions are dry, trees near power lines can cause fires. Trees can also damage power lines and equipment during high winds.

Under the regulations, trees must be kept clear of power lines.

This provides information as required by the Electricity (Hazards from Trees) Regulations 2003. More details are available at eastlandnetwork.nz, or you can call us on **(06) 869 0700** or email trees@eastland.nz

Your obligations as a tree owner

Electricity network companies and tree owners must both comply with their obligations as part of the Electricity (Hazards from Trees) Regulations 2003. If you are a tree owner who is given notice to cut or trim a tree, and you fail to do so, or you fail to advise Eastland Network of the time of the cut or trim, you could be fined up to \$10,000 plus \$500 a day.

You could also be liable for costs associated with outages and the repair of power lines, if damage has been caused by your trees. If a tree is on your property and growing into our power lines, we can arrange for a free inspection from our team upon your request. The tree may be eligible to be removed or trimmed at our cost if we have not cut the tree before.

Eastland Network is this region's electricity lines company, and we've put together some key information you need to know. Please see overleaf for more details.

Faults and emergencies (24 hours): 0800 206 207

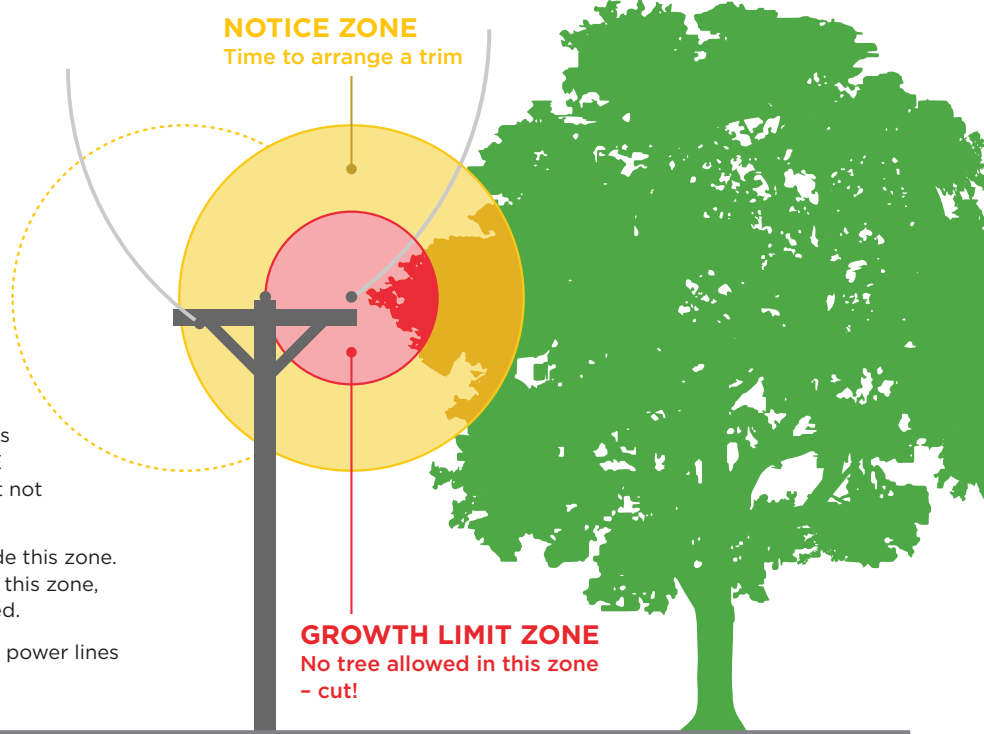
High voltage	NOTICE ZONE	GROWTH LIMIT ZONE
110kV	5.0m	4.0m
50kV	4.0m	3.0m
33kV	3.5m	2.5m
11kV	2.6m	1.6m
Low voltage		
400V/230V	1.5m	0.5m
Service main	1.5m	0.5m

Distances are shown from power lines under all load conditions, including strong winds and snow.

Notice zone — The notice zone extends one metre beyond the growth limit zone. If your tree reaches this zone, you may receive a HAZARD WARNING NOTICE from Eastland Network, cautioning that the tree must not enter the growth limit zone.

Growth limit zone — No part of a tree should be inside this zone. If you own a tree or other vegetation encroaching on this zone, Eastland Network will notify you that a trim is required.

As this chart shows, growth limit zones for trees near power lines vary depending on the voltage of the lines nearby.



'Cut or trim' notice

To keep our lines working and safe for our community, we carry out regular surveys throughout the region and will issue a 'cut or trim' notice to owners of trees that are in the growth limit zone. If you get a notice you have two options:

1. Keep your tree and have it trimmed. You've been notified because your tree is growing close to live power lines. The first tree cut is free. The second time, you'll need to pay – or please ring us for advice on (06) 869 0700.
2. Remove the tree. If you don't want to take care of keeping the tree at a safe distance from our lines, then you'll need to declare in writing that you have 'no interest', and we will fell it. Cutting or trimming trees near power lines must be carried out by approved tree contractors with the right training and equipment.

YOU MUST RETURN THE PERMISSION FORM ALLOWING OUR CONTRACTOR TO CUT OR TRIM THE TREE.

Where a tree has come into contact with an overhead line or constitutes a serious hazard to the conductor, Eastland Network may cut the tree as required to remove the hazard, without notifying the tree owner.

Other important information you need to know

Shelterbelts: If you have a shelterbelt on your property, continue trimming it as usual, but bear in mind the same rules apply as for trees near power lines. Talk to us, or one of our approved contractors, and make sure the trees don't encroach on the notice zone. If your shelterbelt is within four metres of the power lines, you will need to use an approved shelterbelt trimming company or Network arborist. If the shelterbelt is too close, the power lines may need to be turned off for safety (at your cost) while the shelterbelt is trimmed.

Trees near conductors: For safety reasons, tree control work near conductors must be carried out by an Eastland Network approved contractor.*

Private lines: Private overhead service mains connect some customers to our network through high voltage and low voltage overhead electric lines. The owner is responsible for the control of any trees close to these.

Overhead lines: Always treat all lines as live.* If you're working near overhead lines, check that there's at least four metres clearance for any scaffolding or machinery. Be careful when you're working on vehicles with raised apparatus, such as drills, grain augers and ladders. High voltage electricity can jump. Call us first and get the right advice before planning any building project, or starting evacuation work near overhead lines.

Fallen lines: Never approach fallen power lines. For your safety, stay at least 10 metres away. If you see fallen lines, please call our faults line immediately on 0800 206 207. If a line falls on a vehicle, don't touch the vehicle as it could still be live.

New planting: Before starting any new planting, check for power lines and underground cables. The easiest way to avoid problems with trees and power lines is to choose the right tree for the right place in the first place. Always check the plant size information. Allow minimum clearance of at least 1.5 metres below the power lines and three metres to the side.

*If trees on your property need tending to, or you've noticed a problem tree somewhere else, simply give us a call on (06) 869 0700. Do not attempt to cut/trim the tree yourself, please use one of the approved contractors below.

Eastland Network-approved tree contractors

Arborcare Tree Company
Ph (06) 862 5785

Roberts Tree Surgeons
Ph (06) 868 6463

Eastland Treecare
Ph (06) 862 5833

Advanced Tree Solutions
Ph 021 433 640